



JAMES INDUSTRY GROUP CO., LTD

CATALOGUE

For 2016



Your best led solution provider in China

There is a magic tube !

It is a magic !

JaMES

JAMES INDUSTRY GROUP CO.,LTD



James Bond

Mobile: +86-13500093572

+86-13929224100

Add: LianMa Road, LianPing Industry Zone, DaLinShan Town, DongGuan City,
GuangDong Province, China 531080

中国广东省东莞市大岭山镇连平管理区连马路 (原德兴内衣厂)

<http://www.jamesindustry.com>

SKYPE: dgzylighting

E-mail: james@jamesindustry.com

MSN: dgzylighting@hotmail.com

 **FC CE RoHS ERP REACH**

JaMES

Create Valuable Life

COMPANY PROFILE

Found in 2007, **JaMES** is specializing in Led Panel, Led Tube, Led High Bay, Led Corn Light, Led Troffer retrofit Kit, Led Wrap light and Led Refrigerator Light .

JaMes has 60 thousand square meters of factory and 600 employees.

JaMes will always provide its world-wide customers with products of premiere quality, competitive price and timely delivery.

JaMes has VDE, UL, cUL, Lighting Facts, GS, SAA, C-Tick, TUV, CE, RoHs and ERP Reach certifications.

JaMes would like to offer competitive price based on mass production.



Focus on rebate project in North American !



Content Directory

Page 4 Magic Led tube (UL type A and UL type B)

Page 5 Plug and play Led tube (UL type A)

Page 6 Led tube with internal driver (UL type B)

Page 7 Led tube with external driver (UL type C)

Page 8 Led panel

Page 9 Led linear high bay

Page 10 Led UFO type high bay

Page 11 Led troffer and Led troffer retrofit kit

Page 12 Led corn light and Led strip light

Page 13 Led tri-proof light

Page 14 Led cooler light and Led Vapor tight light



Key Features

- This tube can work with most of electronic ballast including Instant start ballast, Rapid start ballast, Programmed ballast, and emergency ballast.
- This tube can work without ballast at AC100-277V or AC100-347V.
- Aluminium housing, glass and whole plastic housing available.

Applications

- Office Lighting
- Education Facility Lighting
- Airport and Station Lighting
- Other Commercial Applications

Technical Data

Product Number	Length (Inch)	Color Temperature	Bare Lamp Watt	Bare Lamp Lumens	Average System Watts (W)			Average System Initial Lumens		
					Low Ballast Factor (0.78)	Norm Ballast Factor (0.88)	High Ballast Factor (1.10)	Low Ballast Factor (0.78)	Norm Ballast Factor (0.88)	High Ballast Factor (1.10)

Aluminium and PC housing

ZY-T8-10W600 BIXX	24	3000K-7000K	10	1300	11.5	12.5	13.5	1437	1550	1680
ZY-T8-15W600 BIXX	24	3000K-7000K	15	1950	16.5	17.5	20.5	2069	2180	2560
ZY-T8-15W900 BIXX	36	3000K-7000K	15	1950	16.5	17.5	20.5	2069	2180	2560
ZY-T8-12W1200 BIXX	48	3000K-7000K	12	1560	13.5	16.5	17.5	1680	2069	2180
ZY-T8-15W1200 BIXX	48	3000K-7000K	15	1950	16.5	17.5	20.5	2069	2180	2560
ZY-T8-18W1200 BIXX	48	3000K-7000K	18	2340	19.5	21.5	22.5	2430	2680	2810
ZY-T8-20W1200 BIXX	48	3000K-7000K	20	2600	21.5	23.5	24.5	2680	2930	3060
ZY-T8-15W600U BIXX	24	3000K-7000K	15	1950	16.5	17.5	20.5	2069	2180	2560
ZY-T8-18W1500 BIXX	60	3000K-7000K	18	2340	19.5	21.5	22.5	2430	2680	2810
ZY-T8-20W1500 BIXX	60	3000K-7000K	20	2600	21.5	23.5	24.5	2680	2930	3060



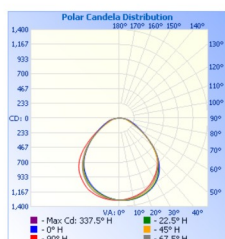
Key Features

- This tube can work with most of electronic ballast including Instant start ballast, Rapid start ballast, Programmed ballast, dimming ballast and emergency ballast.
- This tube can not work with line voltage directly.
- Aluminium housing,glass and whole plastic housing available.

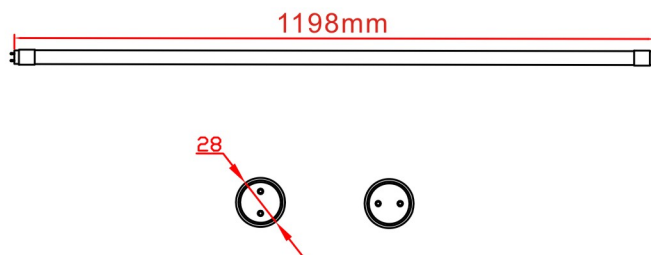
Applications

- Office Lighting
- Education Facility Lighting
- Airport and Station Lighting
- Other Commercial Applications

Photometric Data



Dimension



Technical Data

Product Number	Length (Inch)	Color Temperature	Bare Lamp Watt	Bare Lamp Lumens	Average System Watts (W)			Average System Initial Lumens		
					Low Ballast Factor (0.78)	Norm Ballast Factor (0.88)	High Ballast Factor (1.10)	Low Ballast Factor (0.78)	Norm Ballast Factor (0.88)	High Ballast Factor (1.10)
BT812W2FT / BT8P12W2FT / BT8G12W2FT	24	3000K-7000K	12	1620	13.5	14.5	16.5	1765	1885	2145
BT812W3FT / BT8P12W3FT / BT8G12W3FT	36	3000K-7000K	12	1620	13.5	14.5	16.5	1765	1885	2145
BT812W4FT / BT8P12W4FT / BT8G12W4FT	48	3000K-7000K	12	1620	13.5	14.5	16.5	1765	1885	2145
BT814W4FT / BT8P14W4FT / BT8G14W4FT	48	3000K-7000K	14	1890	15.5	16.5	18.5	2015	2145	2405
BT816W4FT / BT8P16W4FT / BT8G16W4FT	48	3000K-7000K	16	2160	17.5	18.5	19.5	2275	2405	2535
BT818W4FT / BT8P18W4FT / BT8G18W4FT	48	3000K-7000K	18	2430	19.5	21.5	22.5	2535	2795	2925
ZY-T5-15W1200 BIXX	46	3000K-7000K	15	2025	16.5	17.5	18.5	2145	2275	2535
ZY-T5-22W1200 BIXX	46	3000K-7000K	22	2970	23.5	24.5	25.5	3055	3185	3315
ZY-T5-25W1200 BIXX	46	3000K-7000K	25	3375	26.5	27.5	28.5	3445	3575	3705
ZY-T8-33W2400 BIXX	96	3000K-7000K	33	4455	34.5	35.5	36.5	4485	4615	4745

Led Regular Tube

Internal driver by pass type



Key Features

- Internal driver type
- Input at AC100-277V or AC100-347V
- Housing type
 - Aluminium+ PC
 - Plastic housing
 - Glass housing

Applications

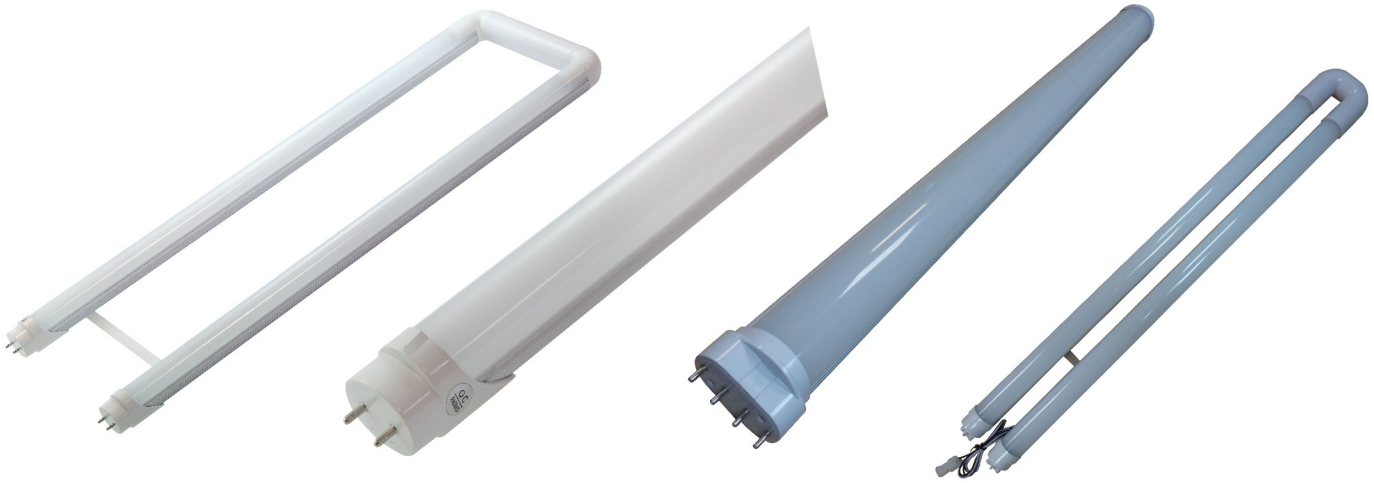
- Office Lighting
- Education Facility Lighting
- Airport and Station Lighting
- Other Commercial Applications

Technical Data

Product Number	Length (Inch)	Input Voltage (Volt)	Color Temperature	Bare Lamp Watt	Bare Lamp Lumens
ZY-T8-10W600 BINS/ZY-T8P-10W600 BINS/ZY-T8G-10W600 BINS	24	AC100-277V/AC100-347V	3000K-7000K	10	1300
ZY-T8-10W900 BINS/ZY-T8P-10W900 BINS/ZY-T8G-10W900 BINS	36	AC100-277V/AC100-347V	3000K-7000K	10	1300
ZY-T8-13W1200 BINS/ZY-T8P-13W1200 BINS/ZY-T8G-12W1200 BINS	48	AC100-277V/AC100-347V	3000K-7000K	12	1560
ZY-T8-15W1200 BINS/ZY-T8P-15W1200 BINS/ZY-T8G-15W1200 BINS	48	AC100-277V/AC100-347V	3000K-7000K	15	1950
ZY-T8-18W1200 BINS/ZY-T8P-18W1200 BINS/ZY-T8G-18W1200 BINS	48	AC100-277V/AC100-347V	3000K-7000K	18	2340
ZY-T8-22W1200 BINS/ZY-T8P-22W1200 BINS/ZY-T8G-22W1200 BINS	48	AC100-277V/AC100-347V	3000K-7000K	22	2860
ZY-T8-22W1500 BINS/ZY-T8P-22W1500 BINS	60	AC100-277V/AC100-347V	3000K-7000K	22	2860
ZY-T8-30W1800 BINS	72	AC100-277V/AC100-347V	3000K-7000K	30	3900
ZY-T8-30W2400 BINS/ZY-T8G-30W2400 BINS	96	AC100-277V/AC100-347V	3000K-7000K	30	3900
ZY-T8-40W2400 BINS	96	AC100-277V/AC100-347V	3000K-7000K	40	5200
ZY-T8-15W600 2G11 BINS	24	AC100-277V/AC100-347V	3000K-7000K	15	1950

Led Regular Tube

External driver by pass type



Key Features

- External driver type
- Input at AC100-277V or AC100-347V
- Housing type
 - Aluminium+ PC
 - Plastic housing
 - Glass housing

Applications

- Office Lighting
- Education Facility Lighting
- Airport and Station Lighting
- Other Commercial Applications

Technical Data

Product Number	Length (Inch)	Input Voltage (Volt)	Color Temperature	Bare Lamp Watt	Bare Lamp Lumens
ZY-T8-10W600 BONT/ZY-T8P-10W600 BONT/ZY-T8G-10W600 BONT	24	AC100-277V/AC100-347V	3000K-7000K	10	1300
ZY-T8-10W900 BONT/ZY-T8P-10W900 BONT/ZY-T8G-10W900 BONT	36	AC100-277V/AC100-347V	3000K-7000K	10	1300
ZY-T8-13W1200 BONT/ZY-T8P-13W1200 BONT/ZY-T8G-12W1200 BONT	48	AC100-277V/AC100-347V	3000K-7000K	12	1560
ZY-T8-15W1200 BONT/ZY-T8P-15W1200 BONT/ZY-T8G-15W1200 BONT	48	AC100-277V/AC100-347V	3000K-7000K	15	1950
ZY-T8-18W1200 BONT/ZY-T8P-18W1200 BONT/ZY-T8G-18W1200 BONT	48	AC100-277V/AC100-347V	3000K-7000K	18	2340
ZY-T8-22W1200 BONT/ZY-T8P-22W1200 BONT/ZY-T8G-22W1200 BONT	48	AC100-277V/AC100-347V	3000K-7000K	22	2860
ZY-T8-22W1500 BONT/ZY-T8P-22W1500 BONT	60	AC100-277V/AC100-347V	3000K-7000K	22	2860
ZY-T8-30W1800 BONT	72	AC100-277V/AC100-347V	3000K-7000K	30	3900
ZY-T8-30W2400 BONT/ZY-T8G-30W2400 BONT	96	AC100-277V/AC100-347V	3000K-7000K	30	3900
ZY-T8-40W2400 BONT	96	AC100-277V/AC100-347V	3000K-7000K	40	5200
ZY-T8-15W600 2G11 BONT	24	AC100-277V/AC100-347V	3000K-7000K	15	1950

can be one driver for one tube, one driver for two tubes, one driver for three tubes and one driver for four tubes.

Led Panel Light



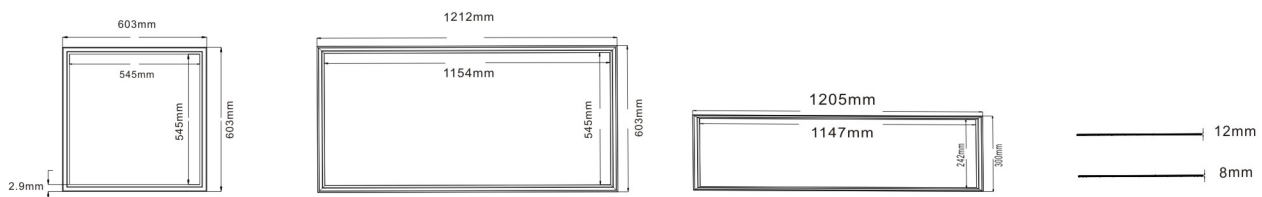
Key Features

- Dimmable and Non Dimmable
- Input at AC100-277V or AC100-382V
- Housing type
 - Premium type: 11mm thickness frame
 - Economy type: 8mm thickness frame
- Can be battery back up

Applications

- Office Lighting
- Education Facility Lighting
- Airport and Station Lighting
- Other Commercial Applications

Dimension



Technical Data

Product Number	Length (Inch)	Input Voltage (Volt)	Color Temperature	Bare Lamp Watt	Bare Lamp Lumens
ZY-P1-30W CDS / ZY-P1-30W CNS	1ft by 4ft	AC100-277V/AC100-382V	3000K-7000K	30	3750
ZY-P1-40W CDS / ZY-P1-40W CNS	1ft by 4ft	AC100-277V/AC100-382V	3000K-7000K	40	5000
ZY-P4-30W CDS / ZY-P4-30W CNS	2ft by 2ft	AC100-277V/AC100-382V	3000K-7000K	30	3750
ZY-P4-40W CDS / ZY-P4-40W CNS	2ft by 2ft	AC100-277V/AC100-382V	3000K-7000K	40	5000
ZY-P4-60W CDS / ZY-P4-60W CNS	2ft by 2ft	AC100-277V/AC100-382V	3000K-7000K	60	7500
ZY-P7-40W CDS / ZY-P7-40W CNS	2ft by 4ft	AC100-277V/AC100-382V	3000K-7000K	40	5000
ZY-P7-50W CDS / ZY-P7-50W CNS	2ft by 4ft	AC100-277V/AC100-382V	3000K-7000K	50	6250
ZY-P7-75W CDS / ZY-P7-75W CNS	2ft by 4ft	AC100-277V	3000K-7000K	75	9375

Led Linear High Bay



Key Features

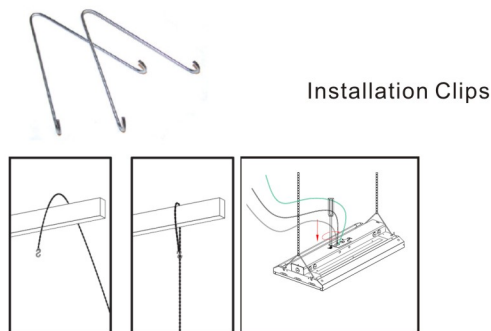
- Dimmable and Non Dimmable
- Input at AC100-277V or AC200-480V
- Meanwell driver and James Driver available
- 0-10V dimming
- Can be battery back up and work with motion sensor
- Five years warranty

Applications

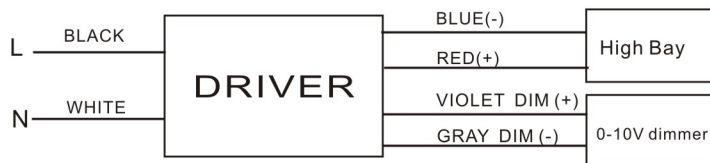
- Warehouse
- Super market
- Factory
- Airport and Station Lighting
- Other Commercial Applications

Installation Instruction

V-Clips for dual point chain or cable hanging (Standard)



Dimming Connection



Technical Data

Product Number	Length (Inch)	Input Voltage (Volt)	Wattage	Color Temperature	Bare Lamp Lumens
ZY-H2-110W XDZ	23.8"x12.6"x3.62"	AC100-277V/AC100-382V/AC200-480V	110W	3000K-7000K	13750
ZY-H5-160W XDZ	23.8"x17.3"x3.62"	AC100-277V/AC100-382V/AC200-480V	160W	3000K-7000K	20000
ZY-H3-110W XDZ	45.9"x12.6"x3.62"	AC100-277V/AC100-382V/AC200-480V	110W	3000K-7000K	13750
ZY-H3-160W XDZ	45.9"x12.6"x3.62"	AC100-277V/AC100-382V/AC200-480V	160W	3000K-7000K	20000
ZY-H3-220W XDZ	45.9"x12.6"x3.62"	AC100-277V/AC100-382V/AC200-480V	220W	3000K-7000K	27500
ZY-H3-320W XDZ	45.9"x17.3"x3.62"	AC100-277V/AC100-382V/AC200-480V	320W	3000K-7000K	40000

Led UFO type high bay



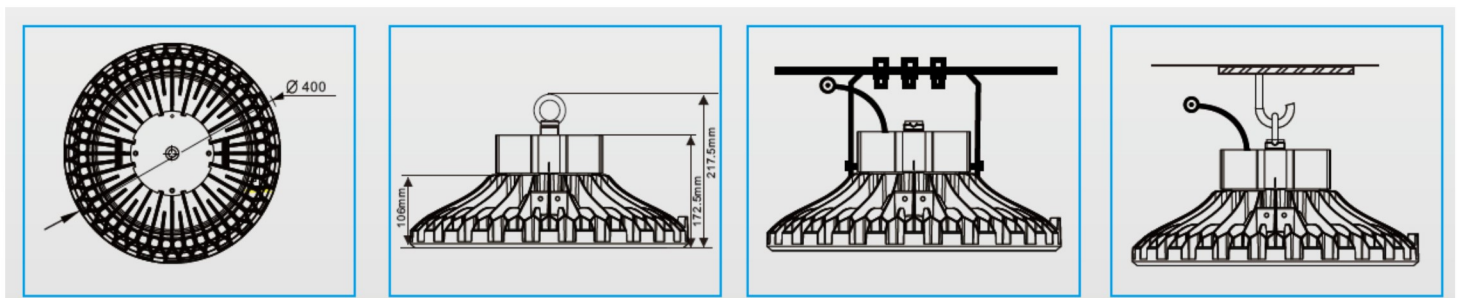
Key Features

- 3-Dimension heat dissipation
- Input at AC100-277V or AC100-382V
- IP 65 Protection rate
- 130 lm/W
- Can work with motion sensor

Applications

- Super Market Lighting
- Warehouse Facility Lighting
- Airport and Station Lighting
- Other Commercial Applications

Dimension



Technical Data

Model	Wattage	Lumens	CRI	CCT	Input Voltage	Frequency	LED Chip	Life Span	Reflector Angle	Housing	PF	Warranty	Waterproof Rate
ZY-HBR100W	100W	>130lm/W	>80	4000-5700K	AC100-277V AC100-382V	50/60Hz	Nichia 3030	50000hours	60/120 °	AL and PC	>0.95	5years	IP65
ZY-HBR120W	120W												
ZY-HBR150W	150W												
ZY-HBR200W	200W												
ZY-HBR240W	240W												

Led Troffer and Led Troffer Retrofit Kit



Key Features

- Dimmable and Non Dimmable
- Input at AC100-277V or AC100-382V
- Meanwell driver and James Driver available
- 0-10V dimming
- Can be battery back up
- Five years warranty

Applications

- Office
- Super market
- Factory and university
- Airport and Station Lighting
- Other Commercial Applications

Technical Data for Led Troffer

Product Number	Dimension	Wattage	Color	Dimmable	Voltage	Lumens	Working Hours	CRI
ZY-T4-25W XNZ	2ft X2ft	25	3000K-6000K	No	AC100-277V or AC100-382V	3375	5 years	80
ZY-T4-25W XDZ	2ft X2ft	25	3000K-6000K	Yes	AC100-277V or AC100-382V	3375	5 years	80
ZY-T4-36W XNZ	2ft X2ft	36	3000K-6000K	No	AC100-277V or AC100-382V	4860	5 years	80
ZY-T4-36W XDZ	2ft X2ft	36	3000K-6000K	Yes	AC100-277V or AC100-382V	4860	5 years	80
ZY-T7-36W XNZ	2ft X4ft	36	3000K-6000K	No	AC100-277V or AC100-382V	4860	5 years	80
ZY-T7-36W XDZ	2ft X4ft	36	3000K-6000K	Yes	AC100-277V or AC100-382V	4860	5 years	80
ZY-T7-50W XNZ	2ft X4ft	50	3000K-6000K	No	AC100-277V or AC100-382V	6750	5 years	80
ZY-T7-50W XDZ	2ft X4ft	50	3000K-6000K	Yes	AC100-277V or AC100-382V	6750	5 years	80

Technical Data for Led Troffer Retrofit Kit

Product Number	Dimension	Wattage	Color	Dimmable	Voltage	Lumens	Working Hours	CRI
ZY-R4-25W XNZ	2ft X2ft	25	3000K-6000K	No	AC100-277V or AC100-382V	3375	5 years	80
ZY-R4-25W XDZ	2ft X2ft	25	3000K-6000K	Yes	AC100-277V or AC100-382V	3375	5 years	80
ZY-R4-36W XNZ	2ft X2ft	36	3000K-6000K	No	AC100-277V or AC100-382V	4860	5 years	80
ZY-R4-36W XDZ	2ft X2ft	36	3000K-6000K	Yes	AC100-277V or AC100-382V	4860	5 years	80
ZY-R7-36W XNZ	2ft X4ft	36	3000K-6000K	No	AC100-277V or AC100-382V	4860	5 years	80
ZY-R7-36W XDZ	2ft X4ft	36	3000K-6000K	Yes	AC100-277V or AC100-382V	4860	5 years	80
ZY-R7-50W XNZ	2ft X4ft	50	3000K-6000K	No	AC100-277V or AC100-382V	6750	5 years	80
ZY-R7-50W XDZ	2ft X4ft	50	3000K-6000K	Yes	AC100-277V or AC100-382V	6750	5 years	80

Led Corn Light

Key Features

- 360 degree beam angle design
- 80% more energy saving compared with traditional lamps
- Easy for installation
- High Lumens Efficiency, more than 130Lm/W



Technical Data

Product Number	Dimension (mm)	Wattage	Color	Dimmable	Voltage	Operate Temp	Lumens	Working Hours	CRI
ZY-CO22WE26	58 X190	22	3000K-6000K	No	AC100-277V	-20°C to40°C	2750	5 years	80
ZY-CO36WE26	74 X230	36	3000K-6000K	No	AC100-277V	-20°C to40°C	4500	5 years	80
ZY-CO36WE39	74 X245	36	3000K-6000K	No	AC100-277V	-20°C to40°C	4500	5 years	80
ZY-CO45WE39	91X210	45	3000K-6000K	No	AC100-277V	-20°C to40°C	5625	5 years	80
ZY-CO55WE39	91 X210	55	3000K-6000K	No	AC100-277V	-20°C to40°C	6875	5 years	80
ZY-CO80WE39	131X295	80	3000K-6000K	No	AC100-277V	-20°C to40°C	10000	5 years	80
ZY-CO100WE39	131 X295	100	3000K-6000K	No	AC100-277V	-20°C to40°C	12500	5 years	80

Led Strip Light

Key Features

- Indoor use only
- 80% more energy saving compared with traditional lamps
- Easy for replacement
- High Lumens Efficiency, more than 130Lm/W

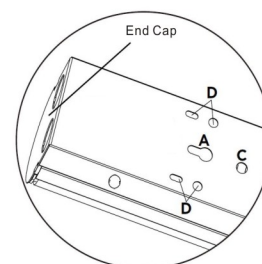


Technical Data

Model	Wattage	Lumens	LxWxD inch
ZY-ST4FTLW	24W	3120	48"x3.35"x3.56"
ZY-ST4FTHL	36W	4680	48"x3.35"x3.56"
ZY-ST8FTLW	42W	5460	95.9"x3.35"x3.56"
ZY-ST8FTHL	68W	8840	95.9"x17.3"x3.62"

Mounting Option

- A- Keyhole Slots for Surface Mounting
- B- Wiring Knockouts
- C- T-Bar Clip Mounting Hole
- D- V-Hook Openings for Chain Mounting



Led Trip Proof Light Series A

Key Features

- IP 65 rate
- 80% more energy saving compared with traditional lamps
- Easy for replacement
- High Lumens Efficiency, more than 120Lm/W



Technical Data

Product Number	Dimension (mm)	Wattage	Color	Dimmable	Voltage	Operate Temp	Lumens	Working Hours	CRI
ZY-TrPA-112	632X85X71	12	3000K-6000K	No	AC100-277V	-20°C to 40°C	1440	5 years	80
ZY-TrPA-124	1232X85X71	24	3000K-6000K	No	AC100-277V	-20°C to 40°C	2880	5 years	80
ZY-TrPA-130	1532X85X71	30	3000K-6000K	No	AC100-277V	-20°C to 40°C	3600	5 years	80
ZY-TrPA-212	632X103.5X77.5	24	3000K-6000K	No	AC100-277V	-20°C to 40°C	2880	5 years	80
ZY-TrPA-224	1232X103.5X77.5	48	3000K-6000K	No	AC100-277V	-20°C to 40°C	5760	5 years	80
ZY-TrPA-230	1532X103.5X77.5	60	3000K-6000K	No	AC100-277V	-20°C to 40°C	7200	5 years	80

Led Trip Proof Light Series B

Key Features

- IP 65 rate
- 80% more energy saving compared with traditional lamps
- Easy for replacement
- High Lumens Efficiency, more than 120Lm/W



Technical Data

Product Number	Dimension (mm)	Wattage	Color	Dimmable	Voltage	Operate Temp	Lumens	Working Hours	CRI
ZY-TrTP-332	1270X264X115	72	3000K-6000K	No	AC100-277V	-20°Cto40°C	8640	5 years	80
ZY-TrTP-432	1270X441.8X115	96	3000K-6000K	No	AC100-277V	-20°Cto40°C	11520	5 years	80
ZY-TrTP-417	668X441.8X115	48	3000K-6000K	No	AC100-277V	-20°Cto40°C	5760	5 years	80

Key Features

- IP 65 rate
- 80% more energy saving compared with traditional lamps
- Easy for installation
- Local utility incentives may be available



Technical Data

Product Number	Driver Type	Length (Inch)	Color Temperature	Bare Lamp Watt	Bare Lamp Lumens	Input Voltage	CRI	Lifespan
ZY-8W600	Internal and External	24	3000K-7000K	8	800	AC100-277V/AC100-382V	81	50000 hours
ZY-12W900	Internal and External	36	3000K-7000K	12	1200	AC100-277V/AC100-382V	81	50000 hours
ZY-15W1200	Internal and External	48	3000K-7000K	15	1500	AC100-277V/AC100-382V	81	50000 hours
ZY-18W1200	Internal and External	48	3000K-7000K	18	1800	AC100-277V/AC100-382V	81	50000 hours
ZY-20W1500	Internal and External	60	3000K-7000K	20	2000	AC100-277V/AC100-382V	81	50000 hours
ZY-22W1500	Internal and External	60	3000K-7000K	22	2200	AC100-277V/AC100-382V	81	50000 hours
ZY-22W1800	Internal and External	72	3000K-7000K	22	2200	AC100-277V/AC100-382V	81	50000 hours
ZY-30W1800	Internal and External	72	3000K-7000K	30	3000	AC100-277V/AC100-382V	81	50000 hours

Key Features

- IP 65 rate
- 80% more energy saving compared with traditional lamps
- Easy for installation
- Local utility incentives may be available

Led Vapor Tight Light



Technical Data

Product Number	Driver Type	Wattage	Color Temperature	Length (inch)	Bare Lamp Lumens	Input Voltage	CRI	Lifespan
ZY-VA20W600	Internal Driver	20	3000K-7000K	24	2800	AC100-277V/AC100-382V	81	50000 hours
ZY-VA30W600	Internal Driver	30	3000K-7000K	24	4200	AC100-277V/AC100-382V	81	50000 hours
ZY-VA40W1200	Internal Driver	40	3000K-7000K	48	5600	AC100-277V/AC100-382V	81	50000 hours
ZY-VA50W1200	Internal Driver	50	3000K-7000K	48	7000	AC100-277V/AC100-382V	81	50000 hours
ZY-VA50W1500	Internal Driver	50	3000K-7000K	60	7000	AC100-277V/AC100-382V	81	50000 hours
ZY-VA60W1500	Internal Driver	60	3000K-7000K	60	8400	AC100-277V/AC100-382V	81	50000 hours